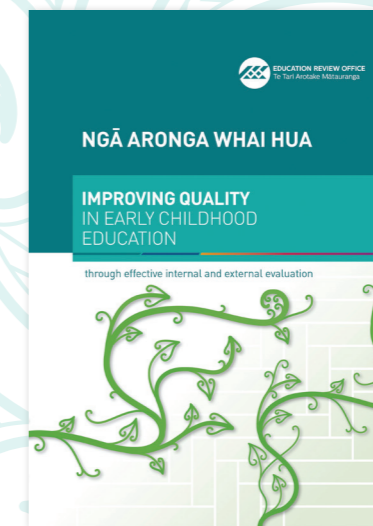
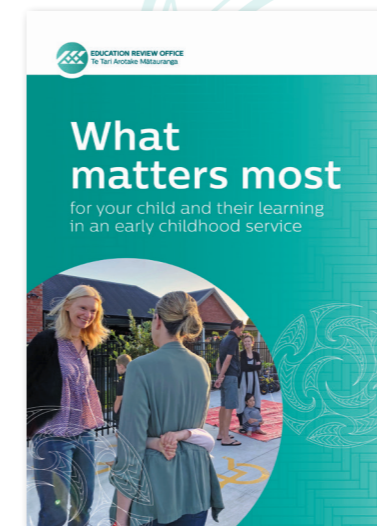
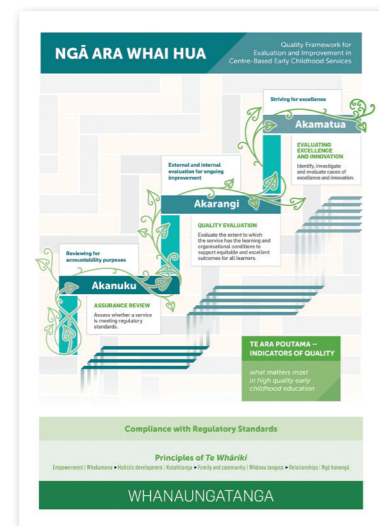


Ngā Ara Whai Hua — Your Go-To-Guide

Resources to support evaluation for improvement in early childhood services



[Ngā Ara Whai Hua Quality Framework for Evaluation and Improvement in Early Childhood Services](#)

Ngā Ara Whai Hua is a bicultural framework based on three interconnected metaphor - Ngā Aka, Poutama and Ngā Ara. It outlines ERO's new approach to review and evaluation for accountability and improvement, and Te Ara Poutama – indicators of quality is at the core of this framework. The approach champions evaluation, both internal and external, as the engine to drive improvement and the Indicators provide a common currency for making judgements about quality for improvement.

Shared evaluation resources - ERO and early childhood services

[Te Ara Poutama](#)

This resource draws together research and evaluation evidence about effective practice and the learning and organisational conditions in early childhood education contexts that promote valued learning outcomes for children in Aotearoa New Zealand. ERO expects all early childhood services to use the Indicators in their internal evaluation and planning for improvement. They form the basis of our external evaluations of early childhood services.

[Ngā Rāpūpuku Indicators Poster](#)

This resource outlines the conditions that support quality early childhood education, along with the valued learning outcomes. It revises and updates the Indicators in He Pou Tataki: How ERO reviews early childhood services (2013). The poster presents the Indicators in relation to the learning and organisational conditions and includes the questions ERO and services ask when working with the indicators.

[Akarangi Quality Evaluation Judgement Rubric](#)

Used in conjunction with the Indicators, the Rubric supports early childhood services to make judgments about the extent to which they have the learning and organisational conditions to support equitable and excellent outcomes for all learners. This Rubric and the Indicators can also help leaders and kaiako identify the actions they need to take to focus their quality improvement planning.

ECE sector resources

[Parent and Whānau Resource](#)

We've written this guide to help parents and whānau understand what matters most for their child and their learning in an early childhood service. Early childhood is an important time in children's life when they learn and develop faster than at any other time. This guide helps parents and whānau to know what they can expect from an early childhood service and what questions they might ask about the quality of the service.

[Ngā Aronga Whai Hua](#)

This document has been developed to support early childhood services to engage in internal evaluation and ERO's external evaluation using Te Ara Poutama – Indicators of quality for early childhood education: what matters most. It builds on Effective Internal Evaluation for Improvement (2016) and replaces most of the content in He Pou Tataki: How ERO reviews early childhood services (2013).

[Piki Ake, Kake Ake](#)

This is a guide to quality improvement planning for early childhood services. It supports services to plan for improvement based on the findings from internal and external evaluation and includes some examples.